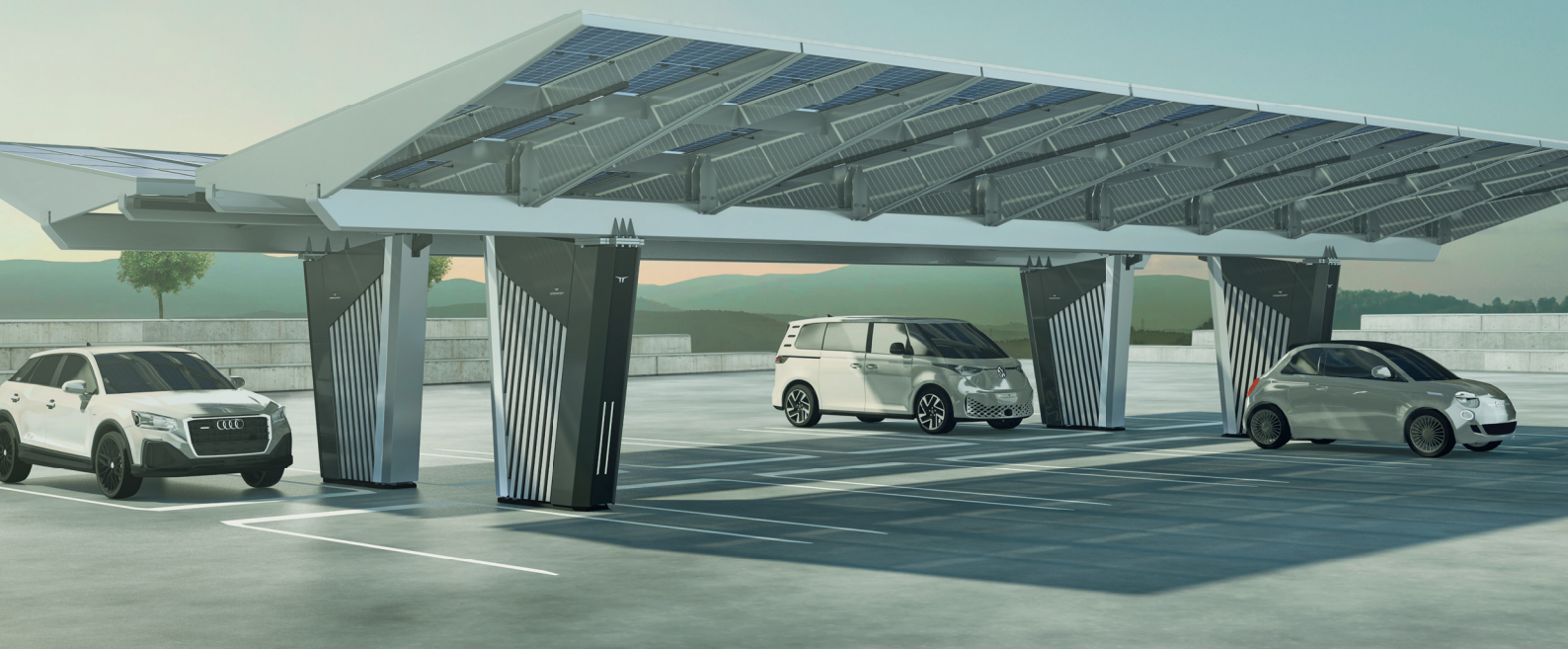




GREENPORT



GREENPORT Design

Strong product benefits

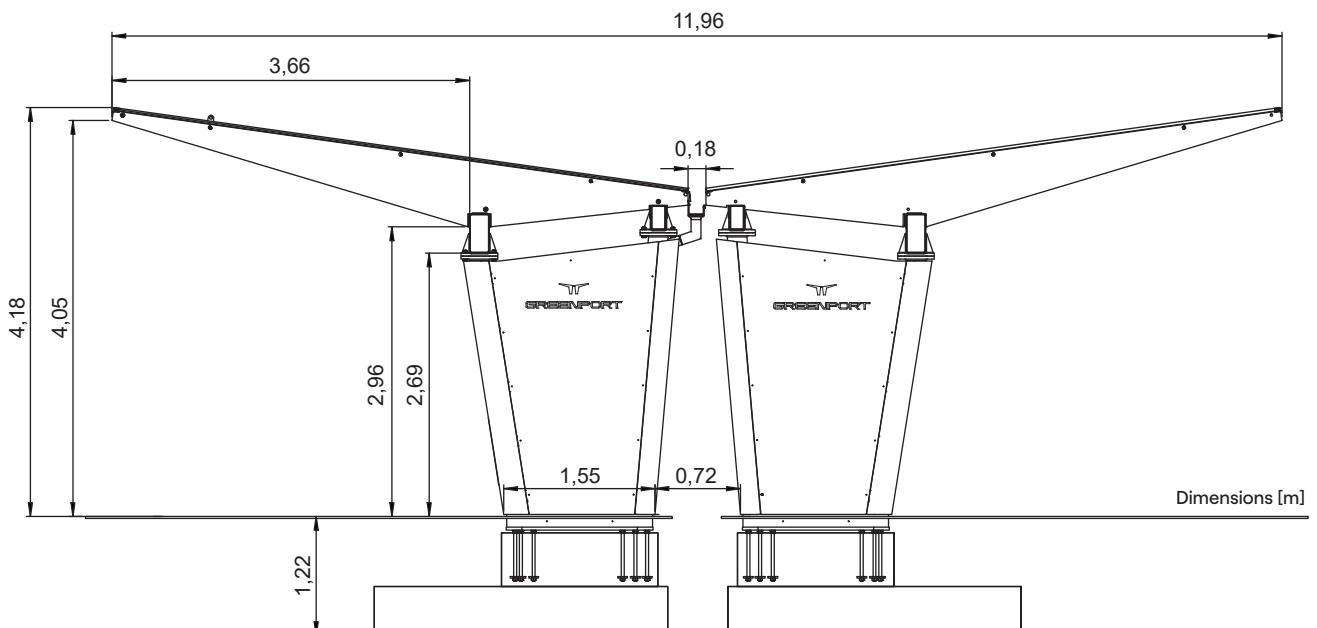
- Bifacial modules for light transmittance, optical design and up to 30 % additional output
- Modular system enables individual adjustment of the length to local conditions
- Six parking spaces possible with only two supports
- Quick and easy installation and commissioning
- Sophisticated wing-shaped design for customer-friendly manoeuvring in and out of the parking space and getting into and out of the vehicle
- Electrical and digital add-ons and connections possible (advertising panels, LED, WiFi, light walls, touch screens, speakers)
- Only four standard parts required for screw-mounting on site (1 crane, 2 persons) = quick and easy installation



Technical data

CARPORT / Type	GREENPORT Design
Roof cladding	With double-glass solar modules (each with 6 modules premounted on a module support structure, supplied ready for installation)
Steel structure / surface	Galvanised or coated with RAL paint, according to customer preference
Corrosion protection	C3m / 7-15 years in accordance with DIN EN ISO 12944
Horizontal width of roof surface, single side	5.89 m (with gutter 6.05 m)
Clearance under the carport	2.60 m
Clearance of carport when connected to the road	4.00 m
Parking space width	System designed for max. four car parking spaces between two supports with a system width of max. 2.85 m per parking space
Support spacing	Max. 11.40 m (axis), lateral overhang of the roof structure over the support max. 3.70 m (self-supporting)
Roof incline	8 degrees
Foundation	Reinforced concrete with the dimensions: block 3.10 x 1.50 x 0.50 m, and base 1.60 x 0.54 x 0.55 m, with an installation depth of -1.20 m
Integrated in the foundation	Connections for drainage DN125, electrical cables DN100 and required electrical grounding
Snow load	Available with a snow load of 2.50 kN/m ² , with no difference in appearance
Drainage (optional)	Box gutter 400 in powder-coated aluminium, in a choice of four RAL colours

PV module	Double glass module without frame
Number of modules	6 modules premounted on a module support structure, supplied ready for installation
PV module type	390Wp HC 2x4 mm bifacial
Dimensions	1956 x 1090 x 9 mm (+/- 3 mm)
Weight	48 kg
Light transmittance	15 %
Hail resistance class	HW 4
Efficiency	18.29 %
Electricity generated by the PV system	Approx. 3 kWp per car parking space





System variants

Car parking spaces	Carport length [m]	Output [kWp]	Module structures	Sup-ports	Foundations	Weight with cladding [kg]	Weight without cladding [kg]
1	4.56	4.7	2	2	2	3865	3545
2	6.84	7.0	3	2	2	4923	4601
3	9.12	9.4	4	2	2	5981	5657
4	13.68	14.0	6	2	2	8098	7770
5	15.96	16.4	7	2	2	9156	8826
6	18.24	18.7	8	2	2	10214	9882
7	20.52	21.1	9	3	3	12147	11655
8	25.08	25.7	11	3	3	14263	13767
9	27.36	28.1	12	3	3	15321	14823
10	29.64	30.4	13	3	3	16379	15880
11	31.92	32.8	14	4	4	18312	17652
12	36.48	37.4	16	4	4	20428	19764
13	38.76	39.8	17	4	4	21487	20821
14	41.04	42.1	18	4	4	22545	21877

Separating joint required after 14 parking spaces

System expansion	Carport length [m]	Output [kWp]	Module structures	Sup-ports	Foundation	Weight with cladding [kg]	Weight without cladding [kg]
4	11.40	11.7	5	1	1	6165	5997





GREENPORT

Dr. Claudia Netrval

Management Business Unit
GREENPORT

GREENoneTEC Solarindustrie GmbH
Energieplatz 1, 9300 St.Veit/Glan, Austria
+43 (0) 664 96 28 427
claudia.netrval@greenonetec.com
www.greenport.solar

A product of **GREENoneTEC** 
SOLAR COLLECTORS